



**RRTechnologies**

**RF Modem**

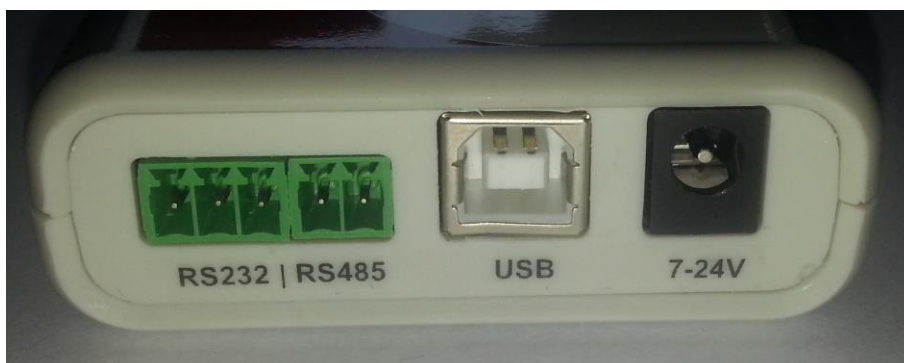
**User manual**

Document: v 1,00  
Date: 01.07.2019

## Index:

1. Hardware – v.1.01 .....	3
2. Software – v. 1.0 .....	4
2.1. Main window.....	4
2.2. Hardware configuration.....	6
2.3. Modem settings. ....	7
2.4. Firmware update.....	8
3. Revision history.....	9

## 1. Hardware – v.1.01



Picture 1 - View of connectors

- RS232 – not active yet
- RS485 – not active yet
- USB – PC connection (HID)
- 7-24V – DC supply power (not needed when connected by USB)



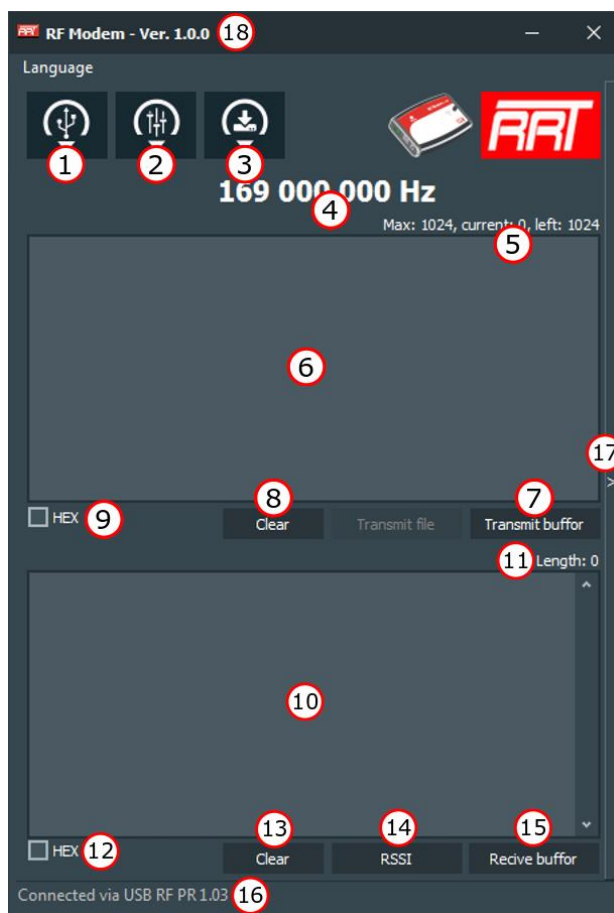
Picture 2 – Top view - LED status

LED status:

- Green – Normal operation (power ON)
- Blue – Transmitting frame
- Yellow – Receiving frame

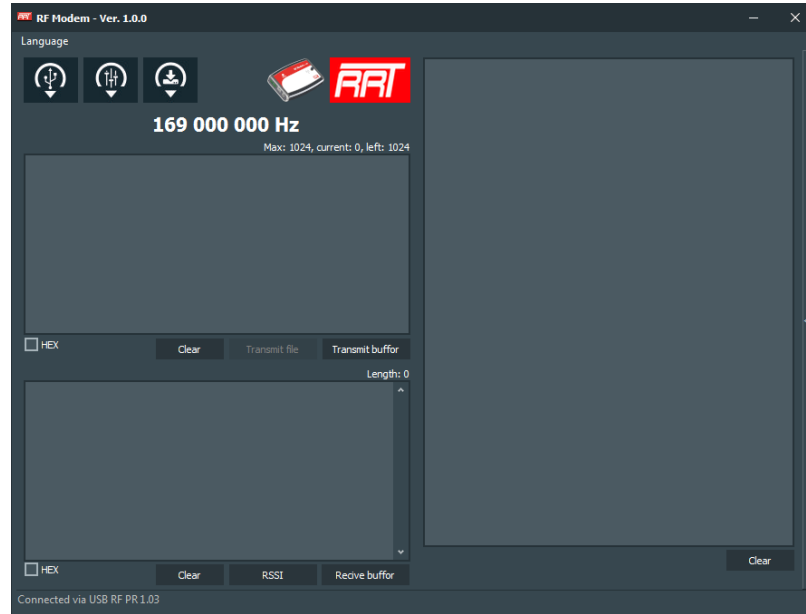
## 2. Software – v. 1.0

### 2.1. Main window



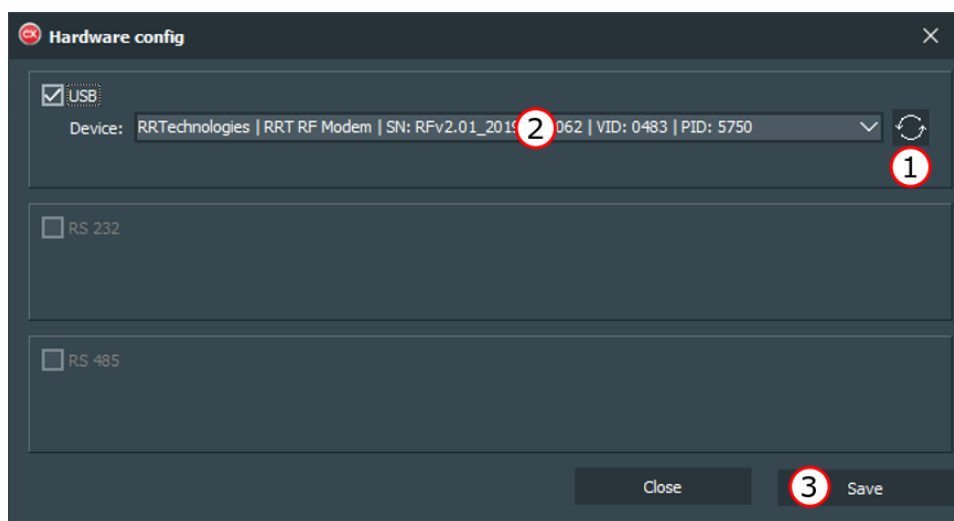
Picture 3 - Software main window

1. Select communication port
2. Modem settings
3. Firmware update
4. Actual modem frequency
5. TX counters (no. of bytes)
6. TX buffer
7. Send buffer to modem and transmit it
8. Clear TX buffer
9. Convert TX buffer between hex value and text value.
10. RX buffer
11. RX buffer length
12. Convert RX buffer between hex and text value
13. Clear RX buffer
14. Read RSSI value from last received frame
15. Read RX buffer from modem
16. Firmware version of connected modem
17. Expand to view logs window
18. Software version



**Picture 4 - Software main window in expanded mode**

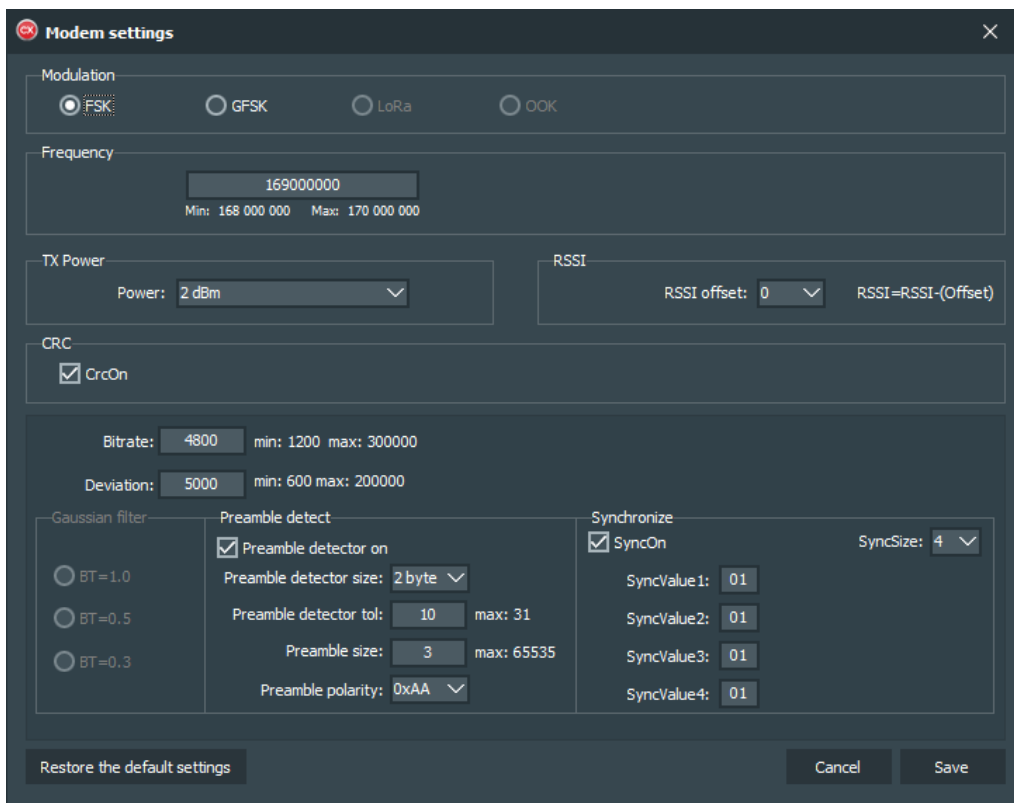
## 2.2. Hardware configuration



Picture 5 - Hardware configuration window

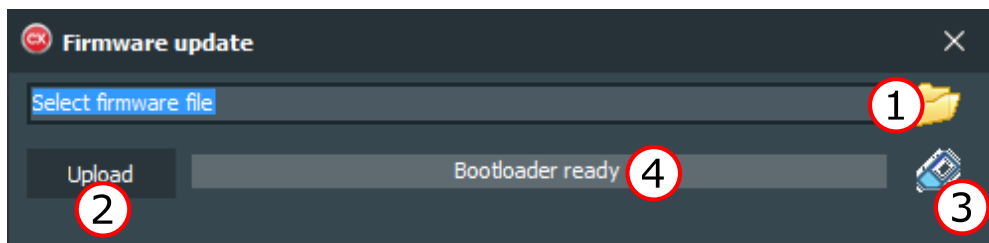
1. Refresh devices
2. Select device
3. Save settings

### 2.3. Modem settings.



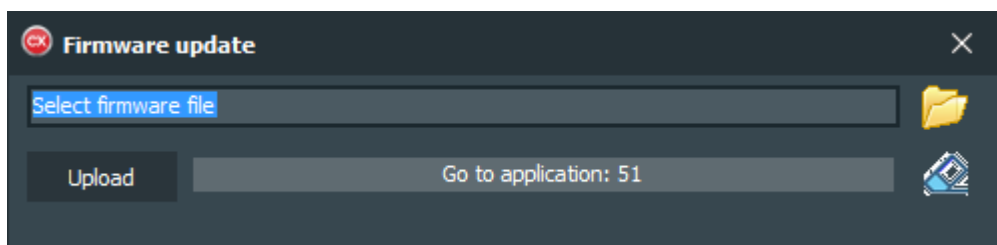
Picture 6 - Modem settings window

## 2.4. Firmware update.



Picture 7 - Firmware update window

1. Select firmware file
2. Upload new firmware to the RF Modem
3. Erase firmware from RF Modem
4. Progress bar



Picture 8 - Firmware update window

Note: When this window is to be close, please wait about 10s to refresh modem.

## 2.5. First run

First run of the RFModemProj.exe application will create in its directory the following files:

- config.cfg
- English.RFModemProj.lng



### 3. Revision history

REV	Description	Date	Author
1.00	First release	2019.07.01	Rafał Płatkowski